



# T&S BRASS AND BRONZE WORKS, INC.

2 Saddleback Cove / P.O. Box 1088  
Travelers Rest, SC 29690

Model No.

**BA-2742**

Item No.

Travelers Rest, SC: 800-476-4103 • Simi Valley, CA: 800-423-0150 • Fax: 864-834-3518 • www.tsbrass.com



**ADA Compliant**

This Space for Architect/Engineer Approval

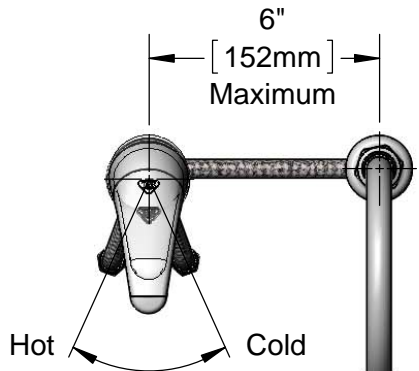
Job Name \_\_\_\_\_ Date \_\_\_\_\_

Model Specified \_\_\_\_\_ Quantity \_\_\_\_\_

Customer/Wholesaler \_\_\_\_\_

Contractor \_\_\_\_\_

Architect/Engineer \_\_\_\_\_



6" Swivel Gooseneck w/  
B-0199-06  
VR 2.2 GPM Aerator

Temperature Index

Ceramic Cartridge w/  
Temperature Limit Stop

Ø 2 1/8" [54mm] Base

Brass Lock Nut &  
Threaded Locking Rod

(2) 16" Flexible Stainless Steel Hoses w/ 3/8" Compression Swivel Ends

Ø 1 11/16" [43mm] Base w/ 1/2" NPSM Male Inlet

6 3/16" [157mm]

5 3/16" [131mm] "ON"

3 15/16" [99mm] "OFF"

5 3/4" [145mm]

10 5/8" [270mm]

1" [25mm] Maximum Thickness

### Rough-in Requirements:

Swivel Deck Flange: Ø 1" [25mm] Mounting Hole

Sidemount: Ø 1 1/2" [38mm] Mounting Hole

### Product Specifications:

Single Lever Side Mount Remote On/Off Control Base Faucet, Ceramic Cartridge, Swivel Gooseneck, Vandal Resistant 2.2 GPM Aerator & (2) 16" Flexible Stainless Steel Supply Hose

### Product Compliance:

ASME A112.18.1 / CSA B125.1  
NSF 61 - Section 9  
NSF 372 (Low Lead Content)  
ANSI A117.1 (ADA)

Drawn: JBC

Checked: JRM

Approved: JHB

Date: 04/23/16

Scale: 1:5

Sheet: 1 of 2



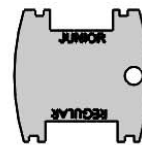
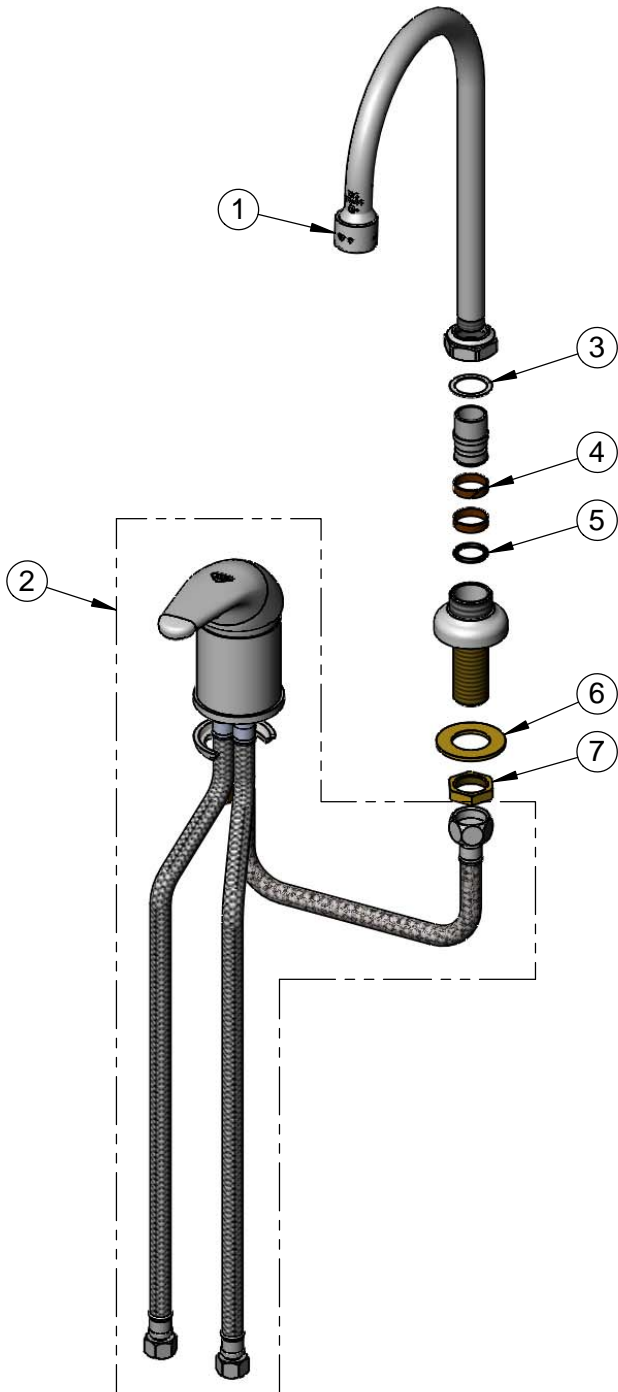
**T&S BRASS AND BRONZE WORKS, INC.**  
 2 Saddleback Cove / P.O. Box 1088  
 Travelers Rest, SC 29690

Model No.  
**BA-2742**

Item No.

Travelers Rest, SC: 800-476-4103 • Simi Valley, CA: 800-423-0150 • Fax: 864-834-3518 • www.tsbrass.com

ITEM NO.	SALES NO.	DESCRIPTION
1	B-0199-06	VR 2.2 GPM Aerator w/ Key
2	B-2740	Side Mount Base Faucet
3	009538-45	Swivel Washer
4	011429-45	Swivel Sleeves (2)
5	001074-45	O-Ring
6	000999-45	Brass Lock Washer
7	002954-45	Shank Lock Nut



015425-45  
 Vandal Resistant Key

Product Specifications:  
 Single Lever Side Mount Remote On/Off Control Base Faucet, Ceramic Cartridge, Swivel Gooseneck, Vandal Resistant 2.2 GPM Aerator & (2) 16" Flexible Stainless Steel Supply Hose

Product Compliance:  
 ASME A112.18.1 / CSA B125.1  
 NSF 61 - Section 9  
 NSF 372 (Low Lead Content)  
 ANSI A117.1 (ADA)