



# T&S BRASS AND BRONZE WORKS, INC.

2 Saddleback Cove / P.O. Box 1088  
Travelers Rest, SC 29690

Model No.

**B-2866-01QT-VRF**

Item No.

Travelers Rest, SC: 800-476-4103 • Simi Valley, CA: 800-423-0150 • Fax: 864-834-3518 • www.tsbrass.com

This Space for Architect/Engineer Approval

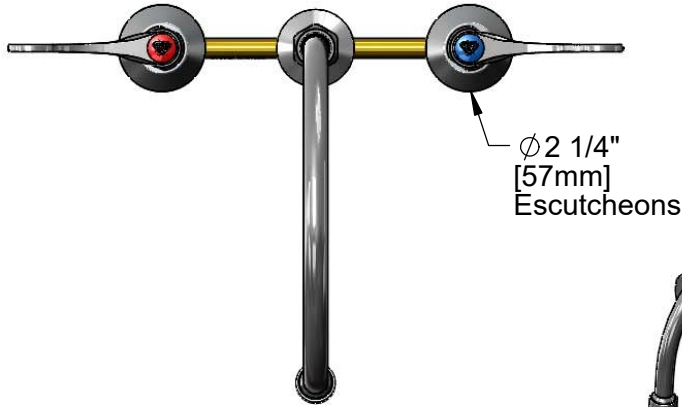
Job Name \_\_\_\_\_ Date \_\_\_\_\_

Model Specified \_\_\_\_\_ Quantity \_\_\_\_\_

Customer/Wholesaler \_\_\_\_\_

Contractor \_\_\_\_\_

Architect/Engineer \_\_\_\_\_



Ø 2 1/4"  
[57mm]  
Escutcheons



**ADA Compliant**

135X-LAM-VR  
8 3/4" Swivel Gooseneck w/  
2.2 GPM VR Laminar Device.  
Rigid Conversion Requires  
014200-45 Lock Washer  
(Included)

Quarter-Turn  
Eterna Cartridges w/  
Spring Checks  
& 4" Wrist Action Handles  
w/ Color Coded Indexes &  
VR Screws

Ø 2"  
[51mm]  
Swivel Deck  
Flange

4 1/4"  
[108mm]

Mounting  
Surface

12 3/8"  
[314mm]

8 3/4"  
[222mm]

6 1/8"  
[156mm]

1 1/4"  
[32mm]  
Maximum  
Thickness

1/2" NPSM  
Coupling Nuts

8"  
[203mm]

Rough-In Requirement:  
Ø 1" [25mm] for Center Shank  
Ø 1 1/2" [38mm] for Hot/Cold Side

### Product Specifications:

8" Concealed Widespread EasyInstall Mixing Faucet, 4" Wrist Action Handles w/ VR Screws, Quarter-Turn Eterna Cartridges w/ Spring Checks, 8 3/4" Swivel/Rigid Gooseneck w/ Vandal Resistant 2.2 GPM Laminar Flow Device and 1/2" NPT Male Inlets

### Product Compliance:

ASME A112.18.1 / CSA B125.1  
NSF 61 - Section 9  
NSF 372 (Low Lead Content)  
ANSI A117.1 (ADA)



# T&S BRASS AND BRONZE WORKS, INC.

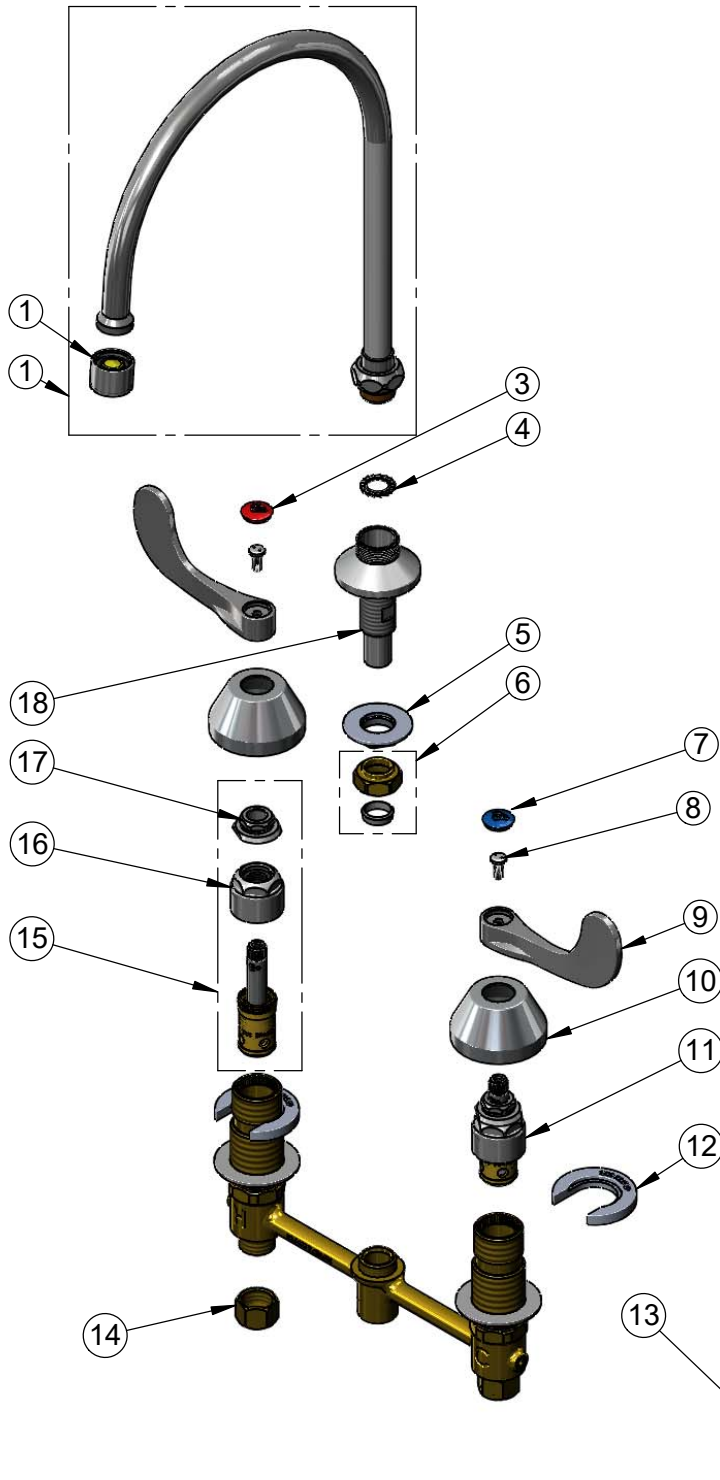
2 Saddleback Cove / P.O. Box 1088  
Travelers Rest, SC 29690

Model No.

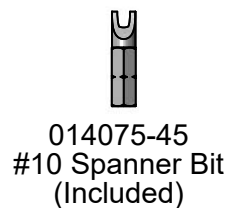
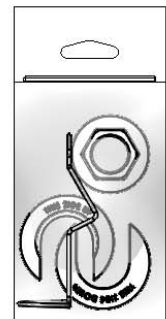
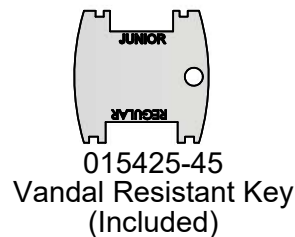
**B-2866-01QT-VRF**

Item No.

Travelers Rest, SC: 800-476-4103 • Simi Valley, CA: 800-423-0150 • Fax: 864-834-3518 • www.tsbrass.com



ITEM NO.	SALES NO.	DESCRIPTION
1	135X-LAM-VR	8 3/4" Swivel Gooseneck w/ 2.2 GPM VR Laminar Flow Device
2	B-0199-21-VRF	VR 2.2 GPM Laminar Flow Device, 55/64-27 UN Female
3	001193-19NS	Red Button Index, Press-in
4	014200-45	Star Washer, Anti-Rotation
5	016742-45	Center Flange Nut
6	016745-45	Compression Nut & Fitting
7	018506-19NS	Blue Button Index, Press-in
8	VRS-2	VR Wrist Action Handle Screw (2) w/ Spanner Bit
9	B-WH4-NS	Wrist Action Handle (New Style)
10	001257-40NS	Bell Escutcheon
11	016752-40NS	EasyInstall, CWS Quarter-Turn Eterna Cartridge w/ Spring Check, LTC
12	016749-45	Sidebody C-Washer
13	016777-45	CWS Hanger
14	000958-20	Coupling Nut
15	016753-40NS	EasyInstall, CWS Quarter-Turn Eterna Cartridge w/ Spring Check, RTC
16	016743-25	CWS Bonnet
17	009002-40NS	Packing Nut (New Style)
18	016754-40	EasyInstall CWS Swivel Center Shank



**Product Specifications:**

8" Concealed Widespread EasyInstall Mixing Faucet, 4" Wrist Action Handles w/ VR Screws, Quarter-Turn Eterna Cartridges w/ Spring Checks, 8 3/4" Swivel/Rigid Gooseneck w/ Vandal Resistant 2.2 GPM Laminar Flow Device and 1/2" NPT Male Inlets

**Product Compliance:**

ASME A112.18.1 / CSA B125.1  
NSF 61 - Section 9  
NSF 372 (Low Lead Content)  
ANSI A117.1 (ADA)