



T&S BRASS AND BRONZE WORKS, INC.

2 Saddleback Cove / P.O. Box 1088
Travelers Rest, SC 29690

Model No.

B-2488

Item No.

Travelers Rest, SC: 800-476-4103 • Simi Valley, CA: 800-423-0150 • Fax: 864-834-3518 • www.tsbrass.com



ADA Compliant

This Space for Architect/Engineer Approval

Job Name _____ Date _____

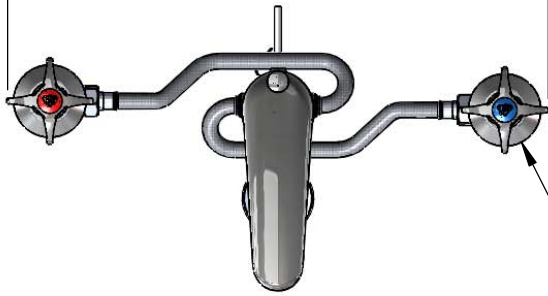
Model Specified _____ Quantity _____

Customer/Wholesaler _____

Contractor _____

Architect/Engineer _____

Adjustable Handle Spread
8 5/8" to 26 5/8"
[219mm to 676mm]



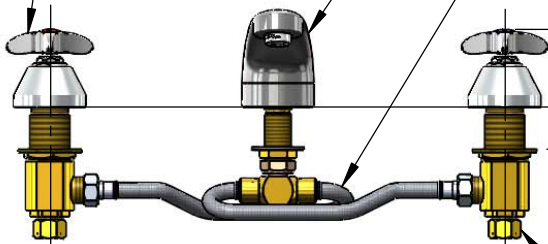
Ø 2 1/4"
[57mm]
Escutcheons



Quarter-Turn
Eterna Cartridges w/
Spring Checks &
4-Arm Handles w/
Color Coded Indexes

5" Cast Spout w/
B-0199-03
2.2 GPM Aerator

12" Flexible
Supply Hoses



2 7/16"
[62mm]

Mounting
Surface
1 1/4"
[32mm]
Maximum
Thickness

3 1/16"
[77mm]

5 1/4"
[134mm]

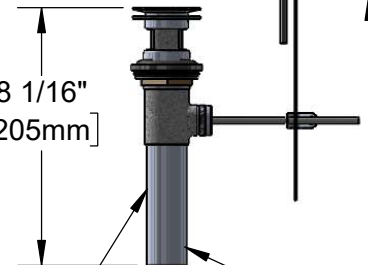
1 15/16"
[50mm]

4 1/8"
[104mm]

Adjustable Inlets
6" to 24"
[152mm to 610mm]

1/2" NPT
Male Inlets w/
Brass Coupling
Nuts

8 1/16"
[205mm]



Ø 1 1/4"
[38mm]
Tailpiece

Pop-Up Drain

Rough-In Requirement:

Center Shank: Ø 1" [Ø 25mm] Mounting Hole

Hot/Cold Bodies: Ø 1 1/2" [Ø 38mm] Mounting Hole

Pop-Up Drain: Fits Sinks with 1 7/16" [36mm] to 1 3/4" [44mm] Drain Hole

Product Specifications:

Adjustable Deck Mount Mixing Faucet, Quarter-Turn Eterna Cartridges w/ Spring Checks, 4-Arm Handles, 5" Cast Spout, 2.2 GPM Aerator, Pop-Up Drain, 12" Flexible Supply Hoses & 1/2" NPT Inlets w/ Coupling Nuts

Product Compliance:

ASME A112.18.1 / CSA B125.1
NSF 61 - Section 9
NSF 372 (Low Lead Content)
ANSI A117.1 (ADA)

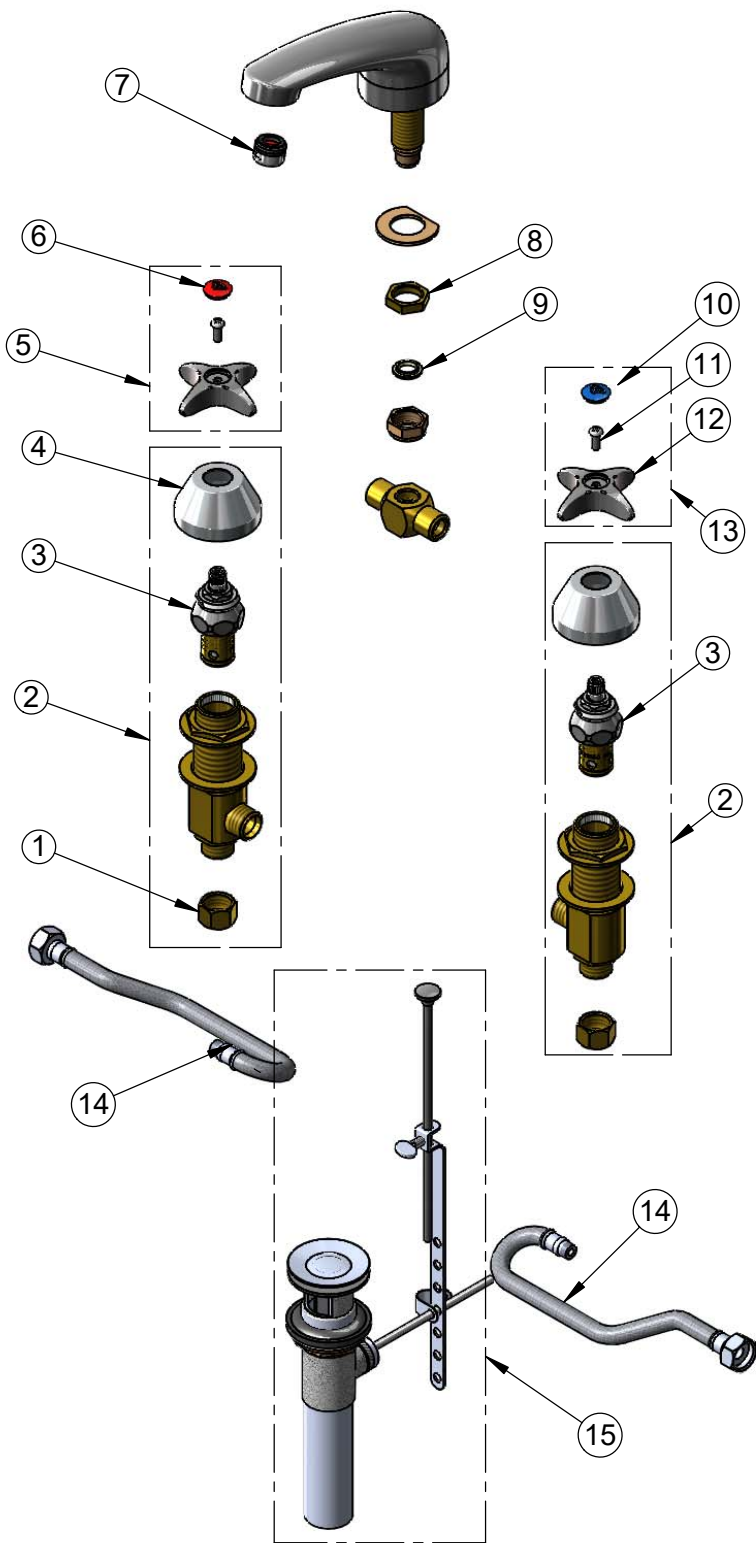


T&S BRASS AND BRONZE WORKS, INC.
 2 Saddleback Cove / P.O. Box 1088
 Travelers Rest, SC 29690

Model No.
B-2488

Item No.

Travelers Rest, SC: 800-476-4103 • Simi Valley, CA: 800-423-0150 • Fax: 864-834-3518 • www.tsbrass.com



ITEM NO.	SALES NO.	DESCRIPTION
1	000958-20	Coupling Nut
2	162A-NS	B-0850 Side Body - Hot
3	006478-40NS	CWS Quarter-Turn Eterna Cartridge w/ Spring Check, RTC
4	001257-40NS	Bell Escutcheon
5	175FHNS	4-Arm Handle, Screw & Red Index
6	001193-19NS	Red Button Index, Press-in
7	B-0199-03	2.2 GPM Aerator
8	002954-45	Shank Lock Nut
9	012702-45	Washer
10	018506-19NS	Blue Button Index, Press-in
11	000925-45	Lab Handle Screw
12	002521-45NS	4-Arm Handle (New Style)
13	175FCNS	4-Arm Handle, Screw & Blue Index
14	011649-45	12" Flexible Supply Hoses (2)
15	B-0898	Pop-Up Drain

Product Specifications:
 Adjustable Deck Mount Mixing Faucet, Quarter-Turn Eterna Cartridges w/ Spring Checks, 4-Arm Handles, 5" Cast Spout, 2.2 GPM Aerator, Pop-Up Drain, 12" Flexible Supply Hoses & 1/2" NPT Inlets w/ Coupling Nuts

Product Compliance:
 ASME A112.18.1 / CSA B125.1
 NSF 61 - Section 9
 NSF 372 (Low Lead Content)
 ANSI A117.1 (ADA)