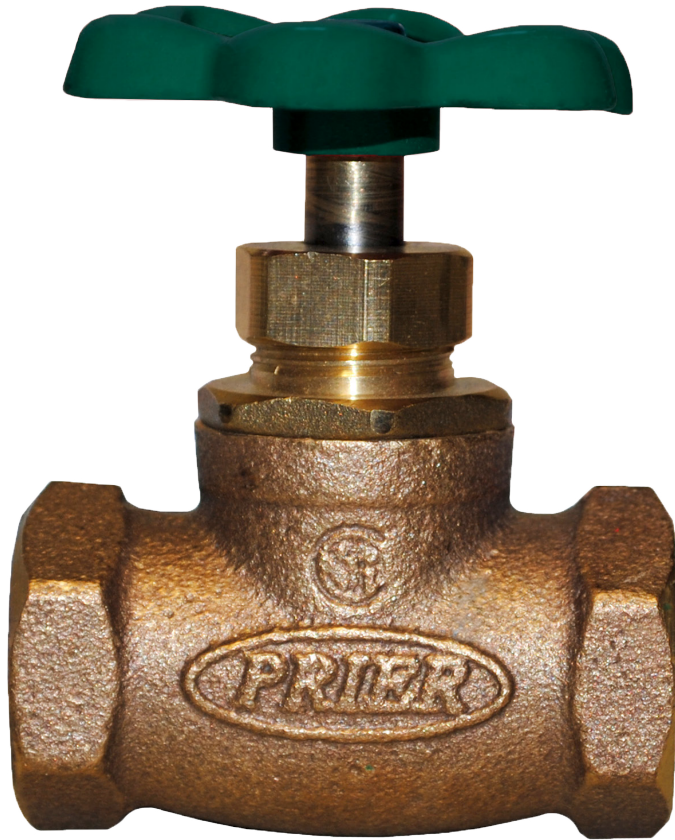




# 20-LF Series Heavy Pattern Globe Valves

LEAD FREE

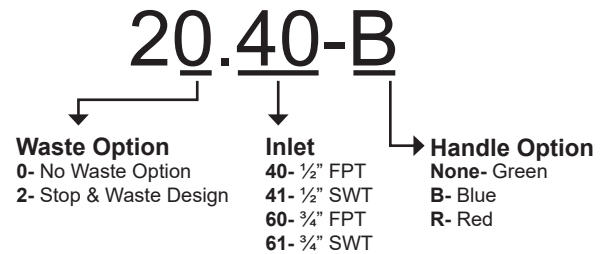


Mansfield Style 20 and 22 Series

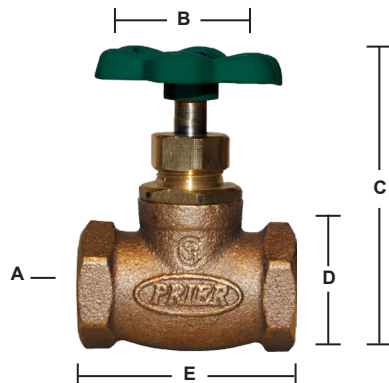
## FEATURES

- Heavy pattern cast brass construction
- Solid brass operating stem
- Large unobstructed waterways for greater flow rates
- Cast metal handle assembly with brass mounting screw
- Green standard handle with red or blue options
- Packing nut design for years of reliable life
- EPDM smooth turn
- SWT and Female pipe thread inlet connections
- Solid brass fast-travel stem with ACME threads
- Stop and waste option available
- Each valve individually tested

## ORDERING



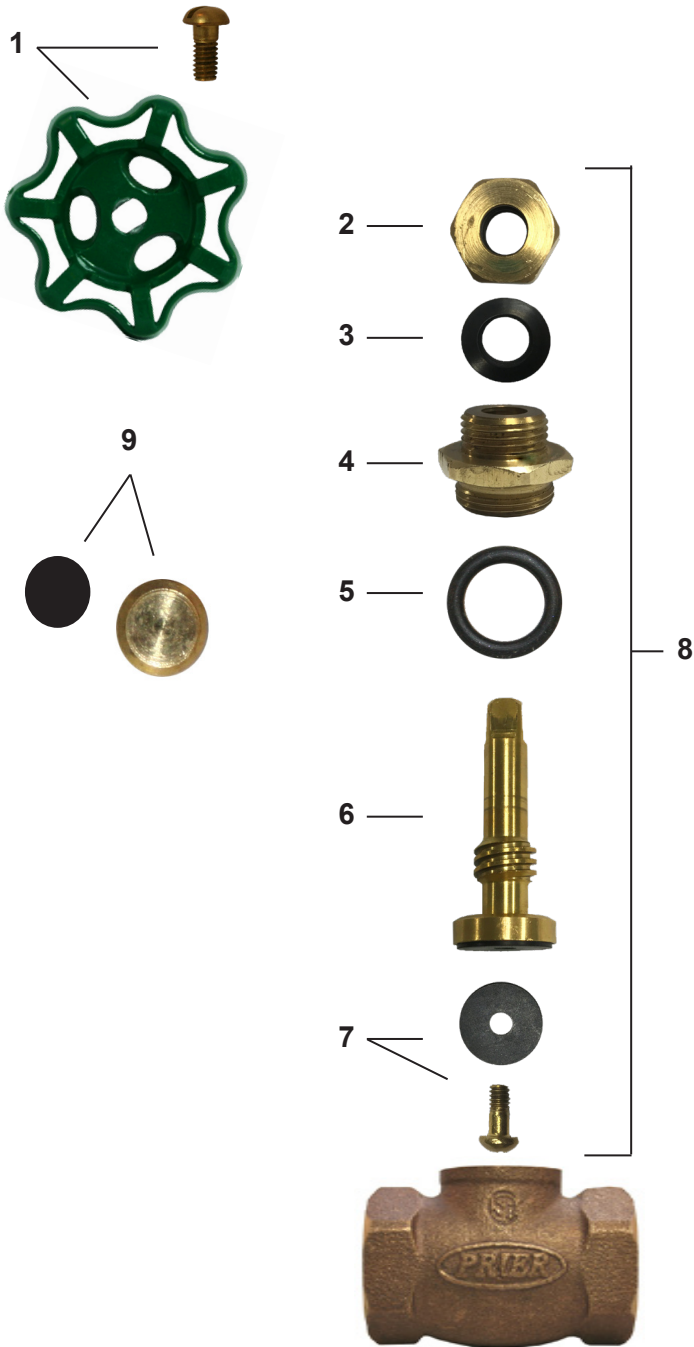
## ROUGH-IN DIMENSIONS



Part No.	A	B	C (Closed)	C (Open)	D	E
20.40	1/2" FPT	1.9"	2.6"	3"	1.3"	2.2"
20.41	1/2" SWT	1.9"	2.6"	2.9"	0.8"	2.2"
20.60	3/4" FPT	1.9"	2.9"	3.2"	1.4"	2.3"
20.61	3/4" SWT	1.9"	2.7"	3"	1"	2.6"
22.40	1/2" FPT	1.9"	2.7"	3"	1.3"	2.2"
22.41	1/2" SWT	1.9"	2.5"	2.9"	0.8"	2.2"
22.60	3/4" FPT	1.9"	2.9"	3.2"	1.4"	2.3"
22.61	3/4" SWT	1.9"	2.8"	3"	1"	2.6"



## 20/22 SERIES REPLACEMENT PARTS



ID	Part No.	Description
1	630-0045	Handle and Screw Kit
2	310-3024	Packing Nut
3	336-3006	Packing Only
4	310-3017	Valve Stem Cap
5	936-3003	O-Ring
6	310-3019	Stem Body
7	630-0047	Bibb Washer and Screw Kit
8	231-3101	Stem Assembly Complete
9	22.00-KT1	Cap and Seal for Stop and Waste
	630-0043	Service Kit for Stop Valves, Contains: 1, 3, 7