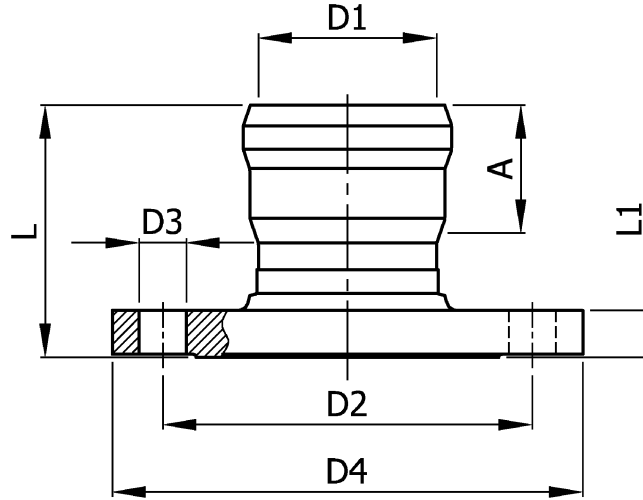


SPECIFICATION:

JOSAM PUSH-FIT™ TYPE 316L STAINLESS STEEL FITTING, 150 PSI
 FEMALE FLANGE ADAPTER WITH FOUR BOLTING HOLES AND
 GASKETED SOCKET ON ONE END.

SS FITTING
PUSH-FIT
FEMALE FLANGE ADAPTER

SERIES **JF**



PART NO.	NOM. PIPE SIZE	D1 (PIPE O.D.)	D2	D3	D4	A (MIN. INSERT DEPTH)	L	L1
JF-9000	1-1/2"	1.7 [42]	3.9 [98]	.63 [16]	5.0 [127]	1.2 [30]	2.8 [71]	.69 [18]
JF-9002	2"	2.1 [53]	4.7 [121]	.75 [19]	6.0 [152]	1.5 [38]	3.1 [80]	.75 [19]
JF-9004	3"	2.9 [73]	5.5 [140]	.75 [19]	7.0 [178]	2.2 [55]	4.0 [101]	.87 [22]
JF-9006	4"	4.0 [102]	7.5 [191]	.75 [19]	9.0 [229]	2.8 [70]	4.6 [118]	.94 [24]
JF-9010	6"	6.3 [159]	9.5 [241]	.87 [22]	11.0 [279]	3.1 [80]	5.2 [131]	1.0 [25]
JF-9012	8"	8.6 [219]	11.8 [299]	.87 [22]	13.5 [343]	4.7 [120]	6.9 [175]	1.1 [29]

DIMENSIONS IN INCHES [mm] UNLESS OTHERWISE NOTED.

DATE OF LAST CHANGE: 7/20/18

DIMENSIONS ARE SUBJECT TO MANUFACTURERS TOLERANCES AND CHANGE WITHOUT NOTICE. WE CAN ASSUME NO RESPONSIBILITY FOR USE OF SUPERSEDED OR VOID DATA.



MICHIGAN CITY, INDIANA

NOTES

WARNING: Cancer and Reproductive Harm - www.P65Warnings.ca.gov