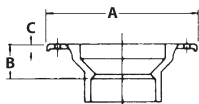
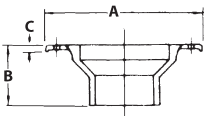


PART NO. 811K**Closet Flange, Adjustable with Metal Ring**

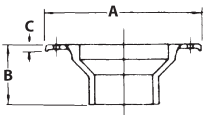
SIZE	HUB END		
	A	B	C
4 x 3	7	1 $\frac{1}{4}$	1 $\frac{1}{4}$

**PART NO. 812****Closet Flange, Adjustable with Metal Ring**

SIZE	SPIGOT		
	A	B	C
4 x 3	7	2 $\frac{5}{8}$	1 $\frac{1}{4}$
4 x 4	7	2 $\frac{5}{8}$	1 $\frac{1}{4}$

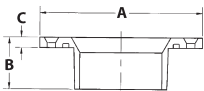
**PART NO. 812P****Closet Flange, Adjustable with Plastic Ring**

SIZE	SPIGOT		
	A	B	C
4 x 3	7	2 $\frac{5}{8}$	7 $\frac{1}{16}$
4 x 4	7	2 $\frac{5}{8}$	7 $\frac{1}{16}$

**PART NO. 815****Flush Closet Flange**

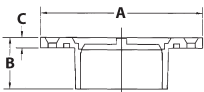
(Fits Over 3" Pipe or Inside 4" Pipe)

SIZE	HUB		
	A	B	C
4 x 4 / 4 x 3	7	2 $\frac{7}{8}$	7 $\frac{1}{16}$

**PART NO. 815K****Flush Closet Flange with Knockout**

(Fits Over 3" Pipe or Inside 4" Pipe)

SIZE	HUB		
	A	B	C
4 x 4 / 4 x 3	7	2 $\frac{7}{32}$	7 $\frac{1}{16}$



Note: Shading indicates available in PVC only.