

ADA/ANSI COMPLIANT BARRIER-FREE SHOWER STALLS:

For roll-in showers with a flat threshold, build up or recess the bathroom floor $\frac{3}{4}$ " less the thickness of the finished floor. For **beveled thresholds**, build up or recess the bathroom floor $\frac{3}{4}$ " less the thickness of the finished floor, ensuring that the finished floor meets the base of the bevel at the threshold.

It is recommended that the bathroom floor outside ADA clear floor space be designed with a floor drain to alleviate any water over spray that may escape the shower stall.

For 36" Transfer showers it is important to ensure the opening is minimum of 36" per ADA 608.2.1. Double check framing dimensions before and after securing the flanges.

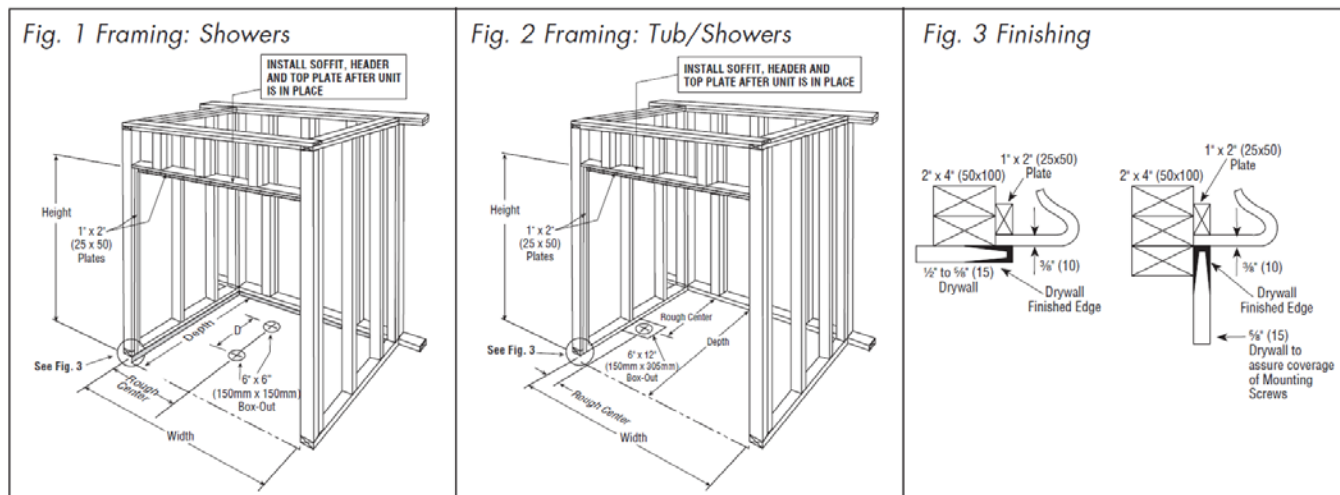
ADA Standards for Accessible Design 2010 – 608.7 Thresholds in roll-in type shower compartments shall be $\frac{1}{2}$ " high maximum in accordance with 303. In transfer type shower compartments, thresholds $\frac{1}{2}$ " high maximum shall be beveled, rounded or vertical.

EXCEPTION: A threshold 2" (50 mm) high maximum shall be permitted in transfer type shower compartments in pre-existing facilities where provision of a $\frac{1}{2}$ " (15 mm) high threshold would disturb the structural reinforcement of the floor slab.

PRE-INSTALLATION PLANNING

1. Unit must be placed within bathroom area before completion of door framing or, if preferred, studs may be omitted or knocked- out to permit unit placement.
2. Pocket dimensions and drain location can be obtained from your retailer or at www.clarionbathware.com/search (1) enter model number of the unit then click search, (2) select the product picture, (3) Under downloads and maintenance select the product cut sheet PDF.
3. Make sure framed-in alcove is of proper size, square and plumb; check floor for levelness.
4. If fire-rated alcove is required, approved finish material must be in place prior to unit installation to meet fire safety requirements of local building code and/or FHA/HUD Minimum Property Standards. NOTE: Finished alcove must have interior dimensions shown on rough-in diagram to permit installation of unit.
5. Foundation materials (industrial plaster, mortar mix, lightweight grout) are mandatory under the bottom of each unit to solidify for wheelchair support.
6. If dome light will be installed, cut out required area within molded 12" (305mm) sq. flat area in center of dome. Use fine-tooth or abrasive-grit blade. Cut from inside. Light fixture must have UL label and be water and steam tight.
7. For showers, provide a 6" x 6" (150mm x 150mm) floor opening for 2" (50mm) IPS and below grade drain connection. (Fig. 1)
For tub/showers, provide a 6" x 12" (150mm x 305mm) floor opening for 1 $\frac{1}{2}$ " (40mm) O.D. plumbing drain and overflow kit.
Note: Confirm if right or left hand tub drain. (Fig. 2)
8. Front corner posts are double 2 x 4 studs for flush mounting or triple 2 x 4 studs for recessed mounting. (Fig. 3)
9. 1 x 2 mounting plates installed on front corner posts and on front header. (Fig. 1 Showers, Fig. 2 Tub-Showers)
10. To avoid obstruction, make sure that supply lines and valve plumbing are not strapped to studs and do not project into alcove. Also, drain pipe must not project above floor level prior to installation.
11. On inside of plumbing wet wall of unit, note location of supply vacuum breaker and mixer valve.
12. Double check location of plumbing to ensure proper fit of all plumbing to the mixing valve and supply elbow.

- Fasten drain fitting to unit before installing (see manufacturer's instructions).



INSTALLATION PROCEDURE

- Before placing unit in framed alcove, spread a bed of foundation material around drain extending to perimeter of shower floor (drain box-out should be back-filled with foundation material).
- Lift and place unit directly on top with drain fitting over and onto waste pipe with threshold firmly on the floor. Assure waste pipe protrudes well into drain fitting. Maintain proper floor slope towards drain.
- Level unit for proper drainage using a 3' (910mm) long level on top of dam and on front face.
- Using holes provided, screw (do not nail) unit to mounting places. Start at holes at lower left and right, proceeding upward alternately on each side and across the top. For wood framework, use #8 x 1 1/2" (40mm) flathead wood screws. For metal framework, use #12 x 1" (25mm) sheet metal screws. Drive screws snugly but do not over tighten.
CAUTION: Do not nail into face of mounting flange. Do not strike flange with any tool.
- Reference instructions for building up or floating sub-floor for barrier-free installation. (See Page 1.)
- Note fitting locations and make final connections of vacuum breaker and hose to supply elbow, and escutcheon plate and knob to mixer valve. NOTE: When caulking drain, protect gelcoat surfaces with corrugated paper. Strap water lines, supply elbow and mixer valve to studs.
- Finish front of the unit with drywall. (Fig. 3)

Threshold Center Hold-Down (For models with skirt higher than 3/4")

Fig. 4a Concrete floor installation:

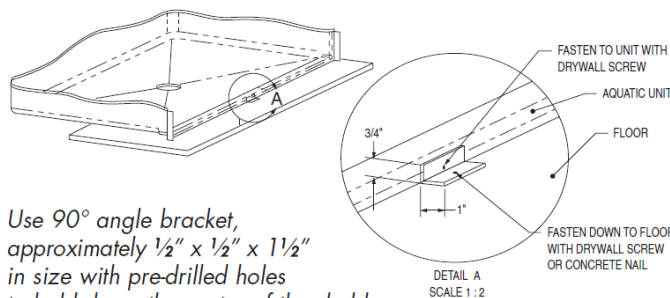
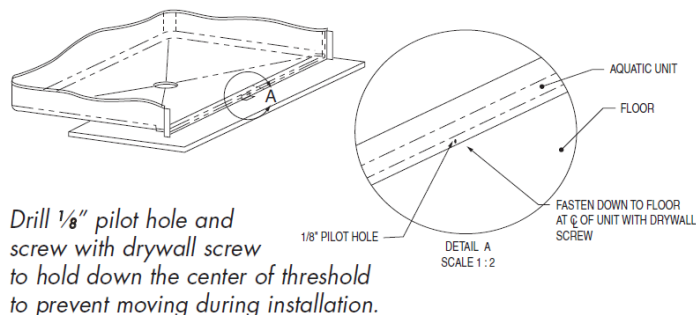


Fig. 4b Wood floor installation:



CLEAN-UP

1. Do not remove warranty/maintenance adhered label. Leave on unit for owner/occupant per code requirements.
2. Prevent staining. Remove all debris before plumbing leak test. Use sponge with warm water and liquid detergent. Rinse, drain and wipe clean. Do not use abrasive cleansers such as scouring powders, steel wool, metal scrapers, sandpaper or anything else that might mar, dull or scratch the finish.
3. Plaster and latex paint may be removed with warm water, liquid detergent and brittle brush or plastic scraper. Glues, tars and enamels may be removed with acetone or paint thinner. Do not use turpentine or laquer thinner. Do not use excessive heat or any caustic solvents or chemicals.
4. Dull areas and light scratches may be removed by buffing with a light colored automotive rubbing compound and buffing pad. Entire unit can be waxed with light colored automotive wax. Do not wax bottom of unit.
5. See user maintenance label for more details.



Customer Service | Technical Services | Warranty Services

IF A BEDDING MATERIAL IS USED UNDER A UNIT; CEMENT SLURRY, THIN MORTAR MIX, PLASTER OF PARIS, OR A COMPARABLE FLOOR FILLING COMPOUND THAT IS NOT WATER SOLUBLE ARE PROPER BEDDING COMPOUNDS. WATER SOLUBLE MATERIALS, FOAM AND OTHER EXPANDING MATERIALS ARE NEVER TO BE USED AS A BEDDING COMPOUND.

IF YOU HAVE ANY QUESTIONS REGARDING INSTALLATION OF YOUR CLARION BATHWARE PRODUCT, PLEASE CALL OUR CUSTOMER SERVICE DEPARTMENT AT 1 (800) 576-9228 OR BY E-MAIL AT CUSTOMERSERVICE@CLARIONBATHWARE.COM

JOB SITE INSTALLATION OF OWNER SUPPLIED ACCESSORIES

All Clarion Bathware units purchased with supplied grab bars are custom reinforced at the factory to accommodate the mounting of said bars.

Any grab bars installed on a Clarion Bathware unit at the job site must have proper reinforcement (wood support and backing plates) at all mounting areas and should comply with ANSI A117.1, Uniform Federal Accessibility Standards (UFAS) and ASTM F446 specifications for grab bars in the bathing area.

Job-site installation of third party supplied grab bars is entirely at the risk and full responsibility of the owner. Any damage to Clarion Bathware units or the property during or after grab bar installation, or any injuries due to improper installation remain the sole responsibility of said owner and cannot be attributed to Clarion Bathware, Inc.

*****WE SUGGEST THAT THE CUSTOMER AVOIDS USING A BATH MAT IN THE UNIT, AS IT COULD CAUSE WATER STAINS OR BLISTERING TO THE FINISH SURFACE OF THE UNIT.**

CLARION BATHWARE PRODUCTS ARE CERTIFIED TO MEET CSA B45.5/IAPMO Z124 STANDARD. FOR DETAILS, PLEASE REFER TO ICC-ES PMG CERTIFICATION PROGRAM.

Premium Cast Acrylic Five (5) Year Warranty

Clarion Bathware warrants to the original purchaser and consumer that its products will be free from defects in material or workmanship when properly installed pursuant to Clarion Bathware installation instructions for the following warranty periods:

Five (5) Year Warranty*
(1) Premium Cast Acrylic

All accessories or purchased parts carry a (1) year warranty.

Upon inspection by an authorized representative, Clarion Bathware will repair or exchange at its sole discretion, any unit found to be defective in material or workmanship. The exchange of a unit will only be considered when Clarion Bathware has eliminated all options to restore the unit to acceptable factory condition. Exchange of a unit is limited to supplying replacement product of comparable size and style, and does not include any cost of removal or installation.

EXCEPTIONS

This warranty shall be voided if the unit is moved from its place of initial installation or is not installed in accordance with the instructions supplied by the manufacturer of the unit. Clarion Bathware will not be held responsible for any damages resulting from improper installation.

Further, this warranty does not apply if the unit has been subjected to accident, abuse, misuse, damage caused by flood, fire, or other force of nature.

Any unauthorized repair or modification to the product would render the warranty null and void.

This warranty does not apply to any equipment or accessories not installed by Clarion Bathware and Clarion Bathware will not be held liable for any results of such acts.

Clarion Bathware is not responsible for any consequential or incidental mishaps, inconvenience, time loss, incidental expense, materials or labor related to the installation of hardware or the actual tub.

The owner agrees by use of the unit that the obligations of Clarion Bathware shall not extend to contingent or indirect damage or injury to the structure of its contents, that the obligations of Clarion Bathware are limited to those set forth herein, and that no other obligations, expressed or implied, are assumed by Clarion Bathware.

The product is not recommended for outside storage.

To obtain warranty service, the Customer must give prompt notice to Clarion Bathware of any claim.

Clarion Bathware is a division of American Bath Group Inc.

****Note:** Premium Cast Acrylic Five (5) Year Warranty may be superseded by specific Brand or Product Collection Warranties. Clarion Bathware Premium Cast Acrylic Five (5) Year Warranty will be the minimum length Warranty for any Premium Cast Acrylic products.